

THIS  
PASSPORT  
BELONGS TO



**Threatened and Endangered Species**

Science SOLs

K.7 a	K.10 c	1.1 f	1.5	1.7 c	2.1 a f
2.5	2.8 c	3.4	3.5	3.6	

With Special Thanks to:



For making the virtual, “Get Schooled!”  
program possible and to the:



*L*

The Louise R. Lester Foundation

For supporting the Geological Resources and  
Minerals Video and Passports!

If YOU want to support one of our  
Virtual Get Schooled Field Trips  
please contact 540-342-5733!



Thank  
You!



Learn more at: <https://centerinthesquare.org/on-demand>

Threatened and Endangered Species



Welcome to  
your Virtual Get  
Schooled Field Trip  
with:





## Do you have an eagle eye?

Find the words listed below in the word search and write their definitions on the lines provided.

e	p	y	t	h	o	n	s	p	n
t	n	y	r	a	e	s	p	o	e
r	p	d	p	r	n	a	i	a	l
u	a	s	a	e	x	t	e	c	a
i	n	p	e	n	c	p	x	h	n
s	d	e	c	n	g	r	t	i	z
t	a	z	i	a	p	e	s	n	o
c	a	t	e	y	r	y	r	g	o
z	x	o	s	p	e	c	i	e	s
e	p	r	e	d	a	t	o	r	d

endangered: \_\_\_\_\_

extinction: \_\_\_\_\_

poaching: \_\_\_\_\_

predator: \_\_\_\_\_

prey: \_\_\_\_\_

species: \_\_\_\_\_

### **BONUS:**

Can you find any other hidden words in the word search above?

List them here:

\_\_\_\_\_

\_\_\_\_\_

# More than 32,000 species are threatened with extinction

That is still 27% of all assessed species.



From <https://www.iucnredlist.org/>

## What is The IUCN Red List?

Established in 1964, The International Union for Conservation of Nature's Red List of Threatened Species has evolved to become the world's most comprehensive information source on the global conservation status of animal, fungi and plant species.

The IUCN Red List is a critical indicator of the health of the world's biodiversity. Far more than a list of species and their status, it is a powerful tool to inform and catalyze action for biodiversity conservation and policy change, critical to protecting the natural resources we need to survive. It provides information about range, population size, habitat and ecology, use and/or trade, threats, and conservation actions that will help inform necessary conservation decisions.

### ***Did You Spot it?***

The IUCN Red List is a conservation status of \_\_\_\_\_, find the answer above and circle it!

Find the word, "habitat" above and underline it, what word is two words to the right from the word, "habitat" in the paragraph above? Write it here \_\_\_\_\_ and write its definition here:

---

---



# Pallas Cats

Least Concern	Near Threatened	Vulnerable	Endangered	Critically Endangered	Extinct in the Wild	Extinct
---------------	-----------------	------------	------------	-----------------------	---------------------	---------

Circle where Pallas cats lie on the Red List above.

What had caused a decline in their population?

What caused a resurgence (incline) in their population?

Draw paw prints in the countries below where Pallas cats can be found. 🐾 🐾 🐾 🐾 🐾 🐾



# Snow Leopards

Least Concern	Near Threatened	Vulnerable	Endangered	Critically Endangered in the Wild	Extinct	Extinct
---------------	-----------------	------------	------------	-----------------------------------	---------	---------

Circle where Snow Leopards lie on the Red List above.

How much has the snow leopard's population declined since 2004?

Circle the correct answer below:

By 10%    By 15%    By 20%    By 50%



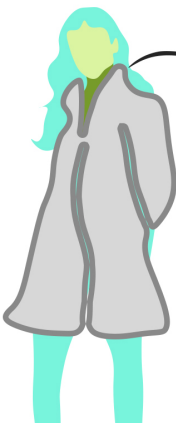
If all of the cat faces below represent 100%, shade in the correct number of faces to show how much the snow leopard's population declined according to your answer above.



Name at least two reasons why the snow leopard's population has been declining:

---

---



Fill in the price tag above with the amount of money that snow leopard coats were once worth in the USA.



# Red Pandas

Least Concern	Near Threatened	Vulnerable	Endangered	Critically Endangered in the Wild	Extinct	Extinct
------------------	--------------------	------------	------------	--------------------------------------	---------	---------

Circle where red pandas lie on the Red List above.

## Do you Remember?

Why are the red pandas considered to be in a more critical state on the Red List than Pallas cats even though there are more red pandas in the world?

---

---

---

What are at least two reasons why the red panda is an endangered species?

---

---

---

## Challenge Question: Did you hear it?

If each panda below represents 1,000 pandas, circle the number of pandas currently living in the wild.

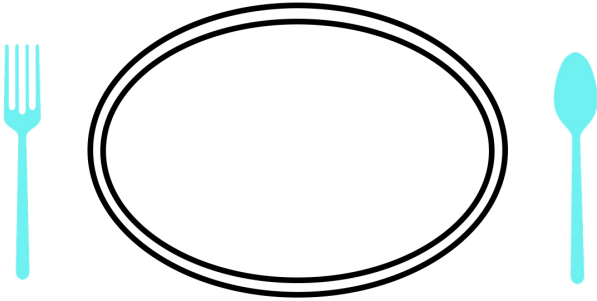


6

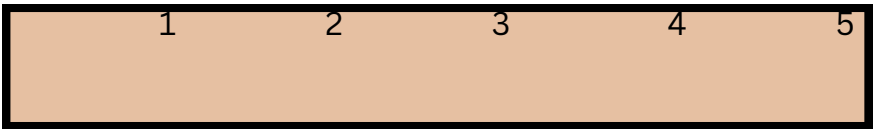


## Dinner Time!

What would a red panda want to eat?  
Draw its favorite meal on the plate below.



The sign at the zoo stated that Red Pandas are similar in size to the housecat. If the ruler below represents a 5ft ruler, can you draw a Red Panda on top of the ruler? Don't forget the tail!



Did you Spot it?

How much do red pandas weigh?  
about \_\_\_\_\_ pounds

Did You Know?

A gallon of water weighs about 8 pounds, so an average adult red panda weighs less than just 2 gallons of water!



# Red Wolves

Least Concern	Near Threatened	Vulnerable	Endangered	Critically Endangered in the Wild	Extinct	Extinct
---------------	-----------------	------------	------------	-----------------------------------	---------	---------

Circle where red wolves lie on the Red List above.

## Cause and Effect

When the red wolf population decreased, what animal's population increased (to the point of overpopulation)

## Now and Then

Then

Red wolves were once found from as far north as

and as far south as

and as far west as Texas!

Use the map on the right to shade in the states on the east coast where red wolves were once found based on your answers above.

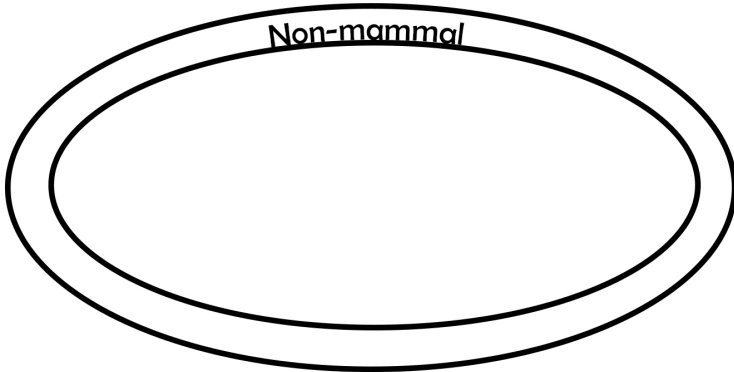
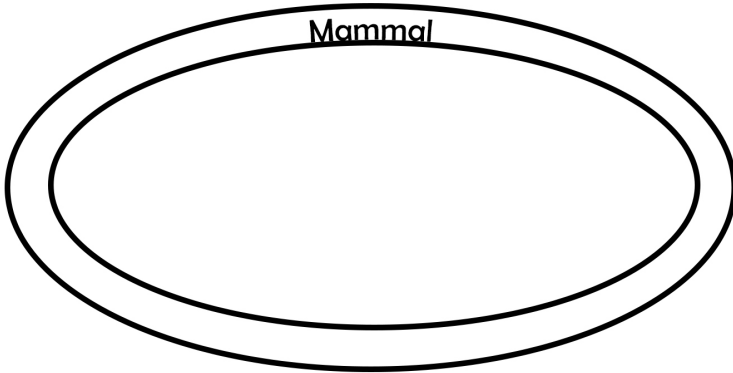
Now

Circle the ONLY state where red wolves are naturally found today.



# Dinner Time!

Red wolves eat a variety of foods, look at the labels on the two plates below and list which foods you saw in the video on the correct plate.



Now, there are less than \_\_\_\_\_ red wolves.

List some of the reasons why the red wolf population has suffered:

---

---

---



# Burmese Pythons



Least Concern	Near Threatened	Vulnerable	Endangered	Critically Endangered	Extinct	Extinct
---------------	-----------------	------------	------------	-----------------------	---------	---------

Circle where Burmese pythons lie on the Red List above.

Where are the Burmese pythons considered an invasive species?

What animal is threatened by the Burmese Python in Florida?

However, in their native habitat of \_\_\_\_\_, Burmese pythons are facing several hazards like:



Should Burmese pythons that are considered invasive be relocated to areas where they are threatened?

Why or why not:

Burmese pythons are one of the world's largest snakes! Their weight can be as much as which common item or creature below:



- A. A washing machine (200 lbs)
- B. A punching bag (100 lbs)
- C. An average male bulldog (50 lbs)
- D. A gallon of water (8 lbs)

---

# Do You Remember...



What were some common threats among all of the creatures that were in this video?

---

---

What was the name of Mill Mountain Zoo's red panda?

---

Which of the creatures mentioned in this video are used in traditional Chinese medicine?

---

Which of the five animals that we learned about in this video is the most, "critically" endangered?

---

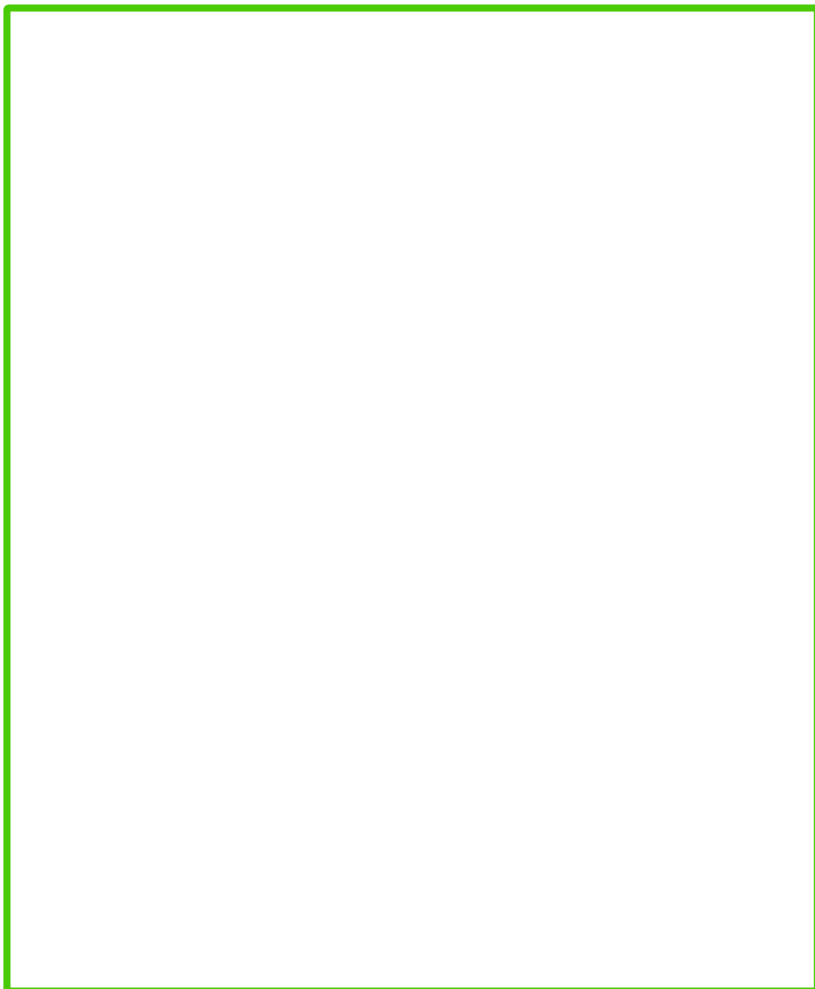
There are \_\_\_\_\_, at risk species and \_\_\_\_\_ endangered species (including plants)

What color is the mask on the gnome in Peyton's office? \_\_\_\_\_

What was your tour guide's name from Mill Mountain Zoo? \_\_\_\_\_

# Now it's your turn to help make a difference!

Create a poster to bring awareness to the importance of  
animal conservation below.



When you are done, you or a guardian can take a picture of your  
creation and send it to [education@centerinthesquare.org](mailto:education@centerinthesquare.org)  
for us to share it on Facebook! Remember to include the name of  
your school and your grade!